

# Sullivan Palatek®

*Dedicated to Quality....*

*....Committed to Support*

**Designed for light demolition jobs, 2 to 4 inch concrete sidewalks and pavement and breaking asphalt**

- 4 bolt backhead
- Heavy duty side rod bolts and springs
- Forged alloy construction
- Removable front head
- Replaceable chuck bushing
- Internal oiler
- Optional muffler
- One year warranty
- Manufactured in USA



Specifications		
Net weight	34 lbs	15 kg
Length	22.5 in	572 mm
Bore	1.75 in	44 mm
Stroke	3.375 in	86 mm
Blows per minute	1550	1550
Chuck sizes	1 x 4 1/4 in	25 x 108 mm
	7/8 x 3 1/4 in	22 x 83 mm
Air inlet (NPT)	3/8 in	10 mm
Air consumption*	49 cfm	1.4 m <sup>3</sup> /m
*estimated		

**FOR OPTIMUM PERFORMANCE, DO NOT OPERATE TOOL ABOVE 90 PSI (6 BAR) WORKING PRESSURE.**

**WARNING:**

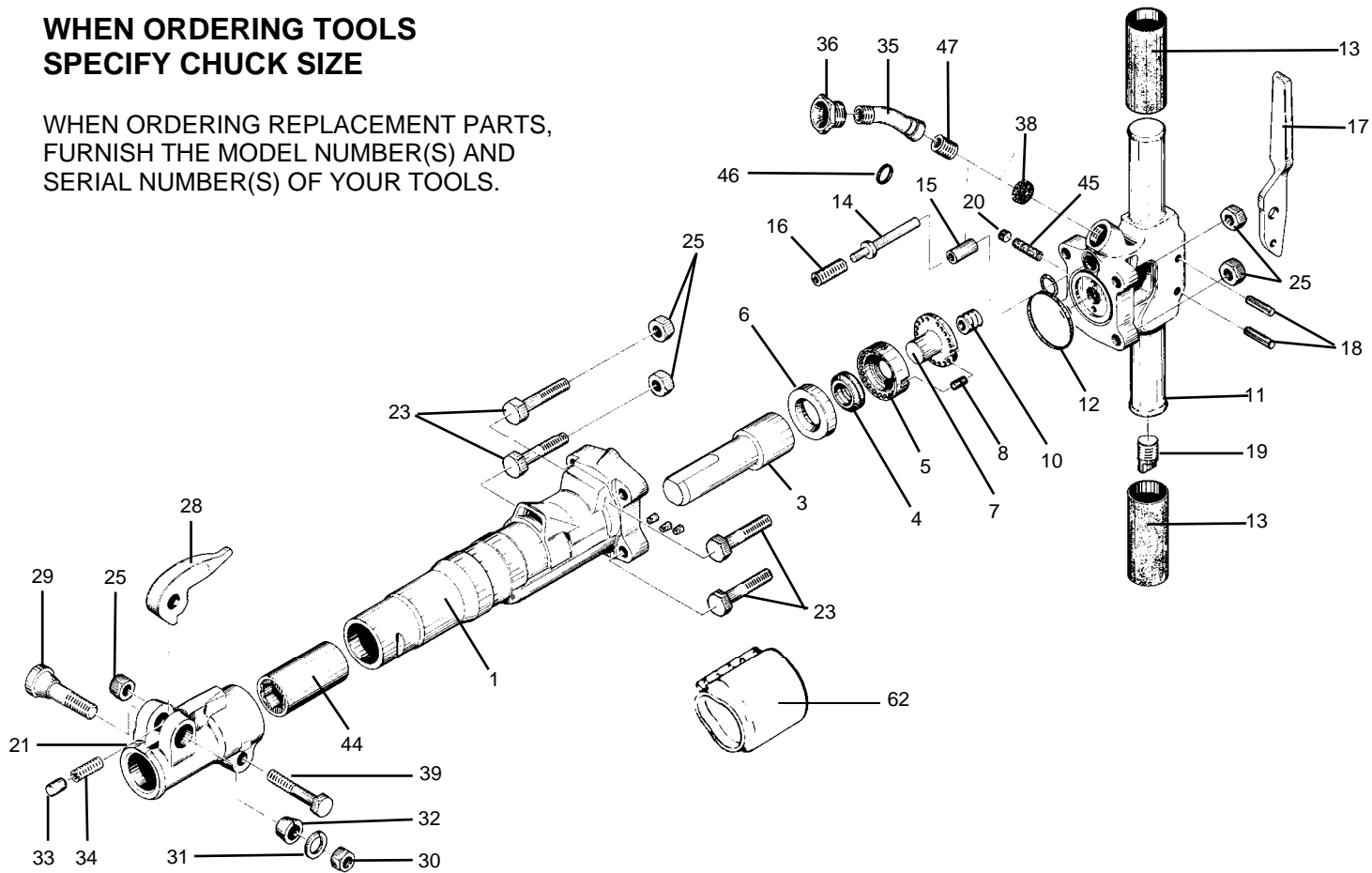
**ALWAYS DISCONNECT THE AIR SUPPLY BEFORE CHANGING CHISELS OR DISMANTLING THE TOOL FOR SERVICE OR REPAIR. FOR MAXIMUM SAFETY WE ADVISE THE INSTALLATION OF A SHUT-OFF VALVE AT THE END OF THE AIR LINE.**

**DO NOT EXCEED 100 PSI (7BAR) WORKING PRESSURE.**

# PARTS LIST PAVEMENT BREAKER 30 lb class SPB-30

**WHEN ORDERING TOOLS  
SPECIFY CHUCK SIZE**

WHEN ORDERING REPLACEMENT PARTS,  
FURNISH THE MODEL NUMBER(S) AND  
SERIAL NUMBER(S) OF YOUR TOOLS.



INDEX	PART	DESCRIPTION	INDEX	PART	DESCRIPTION
1	SI6301	CYLINDER	NS	SI6321-C	FRONTHEAD COMPLETE
3	SI6303	PISTON	23	SI6323	BACKHEAD BOLT (4)
4	SI6304	AUTOMATIC VALVE	24	SI6324	BOLT WASHER (5) (OPT.)
5	SI6305	VALVE CHEST	25	SI6325	BOLT NUT (5)
6	SI6306	VALVE SEAT	28	SI6328	STEEL RETAINER (FORGED)
7	SI6307	VALVE GUIDE	29	SI6329	RETAINER BOLT
8	SI6308	VALVE DOWEL	30	SI6330	RETAINER BOLT LOCKWASHER
10	SI6310	BACKHEAD SPRING	31	SI6331	RETAINER BOLT NUT
11	SI6311	BACKHEAD (INCL.#6615)	32	SI6332	RETAINER BOLT BUSHING
12	SI6312	BACKHEAD O-RING (OPT.)	33	SI6333	RETAINER PLUNGER
NS	SI6311-C	BACKHEAD COMPLETE	34	SI6334	RETAINER PLUNGER SPRING
13	SI6613	HANDLE GRIP (2)	35	SI6335	AIR INLET SWIVEL
14B	SI6614B	THROTTLE VALVE O-RING	36	SI6336	AIR INLET SWIVEL NUT
14	SI6614	THROTTLE VALVE	38	SI6338	AIR INLET SCREEN
15	SI6615	THROTTLE VALVE BUSHING	39	SI6339	FRONTHEAD BOLT
16	SI6316	THROTTLE VALVE SPRING	NS	SI6517	PLUG
17	SI6617	THROTTLE LEVER	44	SI6344-A	CHUCK BUSHING 1" x 41/4" HEX
NS	SI6617S	SAFETY LEVER COMP (OPT)	44	SI6344-B	CHUCK BUSHING 7/8" x 31/4" HEX
18	SI6618	THROTTLE LEVER PIN	45	SI6645	OIL CONTROL FELT
19	SI6319	OIL PLUG	46	SI6346	INLET SWIVEL O-RING
20	SI6620	OIL CONTROL PLUG	47	SI6347	INLET SWIVEL SPRING
21	SI6321	FRONTHEAD	62	SI6362	MUFFLER

**Sullivan  
Palatek**