

# PAVEMENT BREAKER 60 lb class SPB-60

## Sullivan Palatek®

*Dedicated to Quality....*

*....Committed to Support*

**Designed for medium demolition jobs, rock, and 3 to 4 plus inch thick concrete pavement and asphalt**

- 4 bolt backhead
- Heavy duty side rod bolts and springs
- Forged alloy construction
- Removable front head
- Replaceable chuck bushing
- Internal oiler
- Optional muffler
- One year warranty
- Manufactured in USA



Specifications		
Net weight	67 lbs	30 kg
Length	25.625 in	651 mm
Bore	2.25 in	57 mm
Stroke	4.0937 in	104 mm
Blows per minute	1400	1400
Chuck sizes	1 1/4 x 6 in	32 x 154 mm
	1 1/8 x 6 in	28 x 154 mm
Air inlet (NPT)	3/4 in	19 mm
Air consumption*	59 cfm	1.70 m <sup>3</sup> /m
*estimated		

**FOR OPTIMUM PERFORMANCE, DO NOT OPERATE TOOL ABOVE 90 PSI (6 BAR) WORKING PRESSURE.**

**WARNING:**

**ALWAYS DISCONNECT THE AIR SUPPLY BEFORE CHANGING CHISELS OR DISMANTLING THE TOOL FOR SERVICE OR REPAIR. FOR MAXIMUM SAFETY WE ADVISE THE INSTALLATION OF A SHUT-OFF VALVE AT THE END OF THE AIR LINE.**

**DO NOT EXCEED 100 PSI (7BAR) WORKING PRESSURE.**

## Sullivan Palatek®

1201 West US Highway 20  
Michigan City, IN 46360

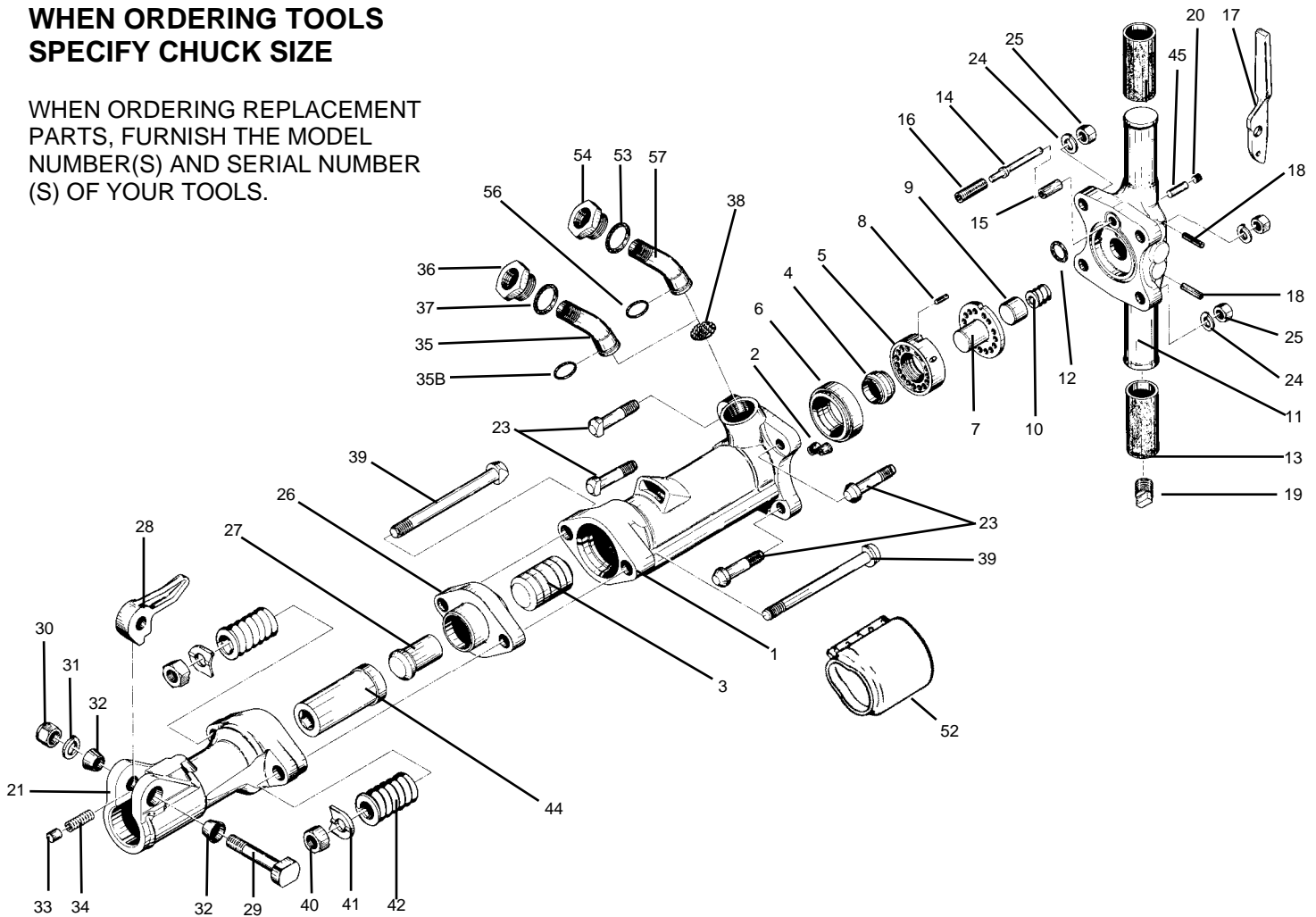
Ph: 800-438-6203  
Fx: 800-725-6203

info@sullivanind.com  
www.sullivanpalatek.com

# PARTS LIST PAVEMENT BREAKER 60 lb class SPB-60

## WHEN ORDERING TOOLS SPECIFY CHUCK SIZE

WHEN ORDERING REPLACEMENT  
PARTS, FURNISH THE MODEL  
NUMBER(S) AND SERIAL NUMBER  
(S) OF YOUR TOOLS.



INDEX	PART	DESCRIPTION	INDEX	PART	DESCRIPTION
1	SI6601	CYLINDER	30	SI6630	STEEL RETAINER BOLT NUT
2	SI6602	CYLINDER PLUGS (2)	31	SI6631	STEEL RETAINER LOCKWASHER
3	SI6603	PISTON	32	SI6632	RETAINER BOLT BUSHING (RUBBER)(2)
4	SI6604	AUTOMATIC VALVE	NS	SI6651	RETAINER BOLT BUSHING (STEEL)(2)
5	SI6605	VALVE CHEST	33	SI6633	STEEL RETAINER PLUNGER
6	SI6606	VALVE SEAT	34	SI6634	RETAINER PLUNGER SPRING
7	SI6607	VALVE GUIDE	35	SI6035	AIR INLET SWIVEL
8	SI6608	VALVE DOWEL PIN	35B	SI6035B	AIR INLET SWIVEL O-RING
9	SI6609	BACKHEAD PLUNGER	36	SI6036	AIR INLET SWIVEL NUT
10	SI6610	BACKHEAD PLUNGER SPRING	37	SI6037	SWIVEL NUT O-RING
11	SI6611	BACKHEAD BARE (incl. #6615)	38	SI6038	AIR INLET SCREEN
NS	SI6611C	BACKHEAD ASSBLY. COMPLETE	39	SI6639	FRONTHEAD BOLT(2)
NS	SI6612	BACKHEAD VALVE PORT O-RING	40	SI6640	FRONTHEAD BOLT NUT(2)
13	SI6613	RUBBER GRIP(2)	41	SI6641	FRONTHEAD BOLT LOCKWASHER(2)
14	SI6614	THROTTLE VALVE	42	SI6642	FRONTHEAD BOLT SPRING(2)
14B	SI6614B	THROTTLE VALVE O-RING	44	SI6644A	FRONTHEAD BUSHING 1-1/8" HEX
15	SI6615	THROTTLE VALVE SLEEVE	44	SI6644B	FRONTHEAD BUSHING 1-1/4" HEX
16	SI6616	THROTTLE VALVE SPRING	45	SI6645	OIL CONTROL FELT
17	SI6617	THROTTLE LEVER	NS	SI6646	FRONTHEAD w/1-1/8" HEX BUSHING
NS	SI6617S	SAFETY LEVER COMPLETE (OPT.)	NS	SI6647	FRONTHEAD w/1-1/4" HEX BUSHING
18	SI6618	THROTTLE LEVER PIN (2)	NS	SI6649	FRONTHEAD ASSBLY. w/1-1/8" HEX
19	SI6768	OIL RESERVOIR PLUG	NS	SI6650	FRONTHEAD ASSBLY. w/1-1/4" HEX
20	SI6620	OIL CONTROL FELT PLUG	52	SI6652	MUFFLER ASSBLY. (OPTIONAL)
21	SI6621	FRONTHEAD BARE	53	SI6653	SWIVEL NUT O-RING (sub.#6437) 1/4" NPT
23	SI6623	BACKHEAD BOLT (4)	54	SI6654	SWIVEL NUT 1/4" NPT
24	SI6624	BACKHEAD BOLT LOCKWASHER (4)	56	SI6656	SWIVEL O-RING (sub.#6435B) 1/4" NPT
25	SI6625	BACKHEAD BOLT NUT (4)	57	SI6657	SWIVEL (sub.#6435) 1/4" NPT
26	SI6626	TAPPET SEAT			
27	SI6627	TAPPET			
28	SI6628	STEEL RETAINER (FORGED)			
29	SI6629	STEEL RETAINER BOLT			