

Dedicated to Quality....

...Committed to Support

Sullivan Palatek®

Designed for medium (8) to heavy (11) concrete demolition, or cutting rivet heads. D handle with internal variable speed trigger.



- Rotatable Exhaust Deflector
- One piece machined premium alloy cylinder
- Replaceable Auto valve for extended life
- Safe bridged or stepped internal cylinder (piston will not exit bottom of tool)
- Utilizes 11X jumbo steels
- Spring retainer
- Standard upper and lower hardened sleeves
- Urethane bumper for longer life
- Screened 1/2" npt inlet
- Requires whip hose and oiler
- One year Warranty
- Made in USA

Specifications	SRB-8		SRB-11	
Net weight	30 lbs	14 kg	33 lbs	15 kg
Length	22 1/2 in	572 mm	25 1/2 in	648 mm
Bore	1.1875 in	30 mm	1.1875 in	30 mm
Stroke	8 in	203 mm	11 in	279 mm
Blows per minute	1140	1140	850	850
Chuck size	11 X JUMBO		11 X JUMBO	
Air inlet (NPT)	1/2 in	12 mm	1/2 in	12 mm
Air consumption*	44 cfm	1.3 m ³ /m	50 cfm	1.41 m ³ /m
*estimated				

FOR OPTIMUM PERFORMANCE, **DO NOT** OPERATE TOOL ABOVE **90 PSI (6 BAR)** WORKING PRESSURE.

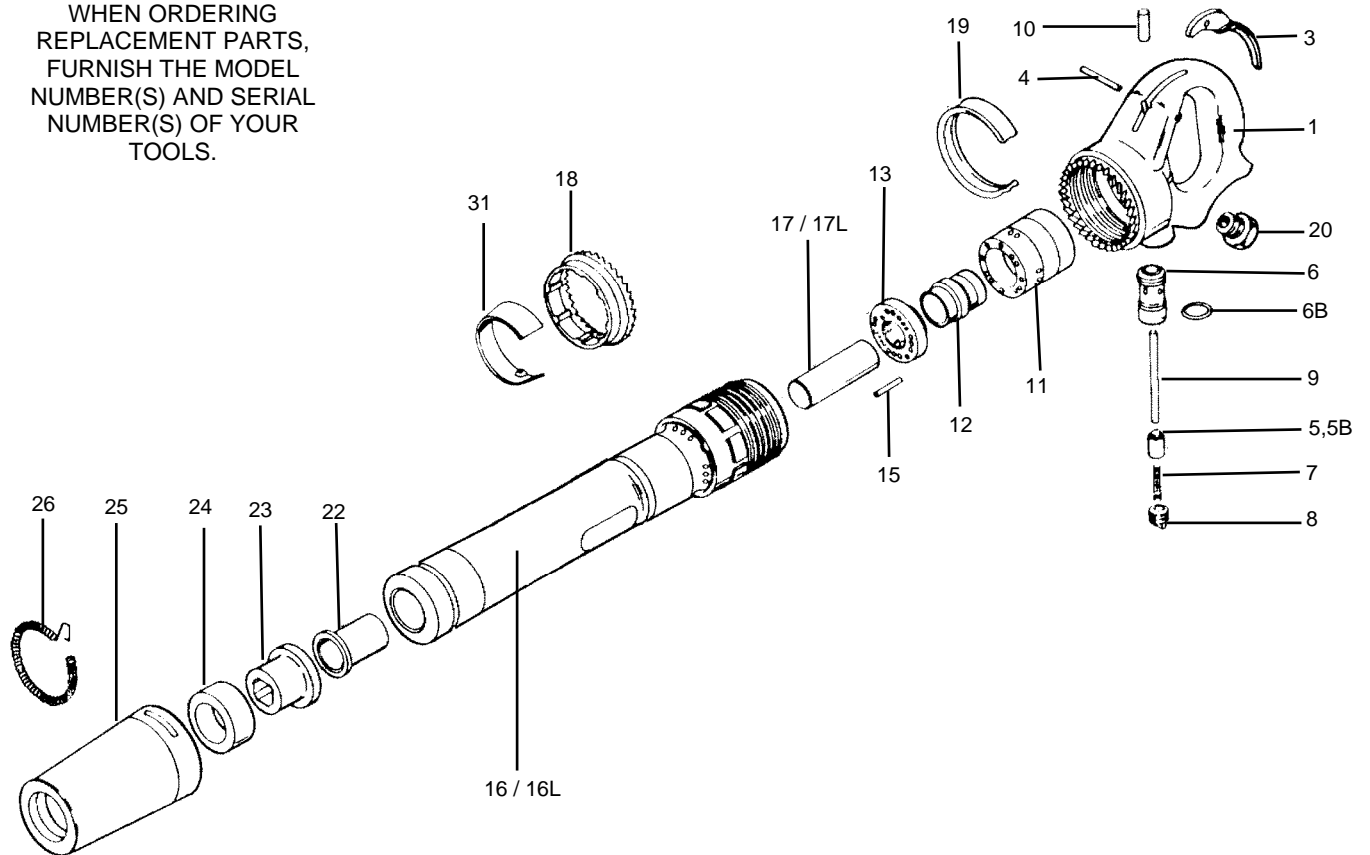
WARNING:

ALWAYS DISCONNECT THE AIR SUPPLY BEFORE CHANGING CHISELS OR DISMANTLING THE TOOL FOR SERVICE OR REPAIR. FOR MAXIMUM SAFETY WE ADVISE THE INSTALLATION OF A SHUT-OFF VALVE AT THE END OF THE AIR LINE.

DO NOT EXCEED 100 PSI (7BAR) WORKING PRESSURE.

PARTS LIST RIVETBUSTERS 30 & 40 lb class SRB-8, 11

WHEN ORDERING REPLACEMENT PARTS, FURNISH THE MODEL NUMBER(S) AND SERIAL NUMBER(S) OF YOUR TOOLS.



INDEX	PART	DESCRIPTION	INDEX	PART	DESCRIPTION
1	SI6761	HANDLE BARE (INCL. 6770)	16L	SI6776LTB	BARREL (#11)
NS	SI6762	HANDLE COMPLETE	17	SI6777B	PISTON 3"
3	SI6763	THROTTLE LEVER	17L	SI6777BL	PISTON 4" *
4	SI6764	THROTTLE LEVER PIN	18	SI6778	HANDLE LOCK RING
5	SI6765	THROTTLE VALVE	19	SI6779	HANDLE LOCK SPRING
5B	SI6765B	THROTTLE VALVE "O" RING**	20	SI6780	HANDLE BUSHING
6	SI6766	THROTTLE VALVE BUSHING	22	SI6682	UPPER SLEEVE BUSHING
6B	SI6766B	THROTTLE VALVE "O" RING	23	SI6083	LOWER SLEEVE BUSHING
7	SI6767	THROTTLE VALVE SPRING	24	SI6084	RETAINER BUMPER(URETHANE)
8	SI6768	THROTTLE VALVE PLUG	25	SI6085	RETAINER
9	SI6769	PUSH PIN	26	SI6686	RETAINER SPRING
10	SI6770	PUSH PIN BUSHING	31	SI6781	EXHAUST DEFLECTOR
11	SI6771	VALVE BOX	NS	SI6235	SWIVEL (OPTIONAL)
12	SI6772	VALVE	NS	SI6086	JUMBO RETAINER COMPLETE
13	SI6773	VALVE COVER FRONT			
NS	SI6774	VALVE ASSEMBLY			
15	SI6775	VALVE DOWEL PIN			
16	SI6776TB	BARREL (#8)			

*note: PN: SI6777BL may be used in model 8RB to produce more energy at a slower B.P.M.

**note PN: SI6765B may be purchased locally as 2-010

Sullivan
Palatek