

Dedicated to Quality....

....Committed to Support

Sullivan **Palatek**

Designed for driving spikes in used or seasoned ties

- 4 bolt backhead
- Heavy duty side rod bolts and springs
- Forged alloy construction
- Forged alloy striking dolly
- Internal oiler with grease fitting for dolly lubrication
- Optional muffler
- One year warranty
- Manufactured in USA



Specifications		
Net weight	64 lbs	29 kg
Length	24.5 in	622 mm
Bore	2.25 in	57 mm
Stroke	4.0937 in	104 mm
Blows per minute	1400	1400
Air inlet (NPT)	3/4 in	19 mm
Air consumption*	59 cfm	1.7 m ³ /m
*estimated		

FOR OPTIMUM PERFORMANCE, DO NOT OPERATE TOOL ABOVE 90 PSI (6 BAR) WORKING PRESSURE.

WARNING:

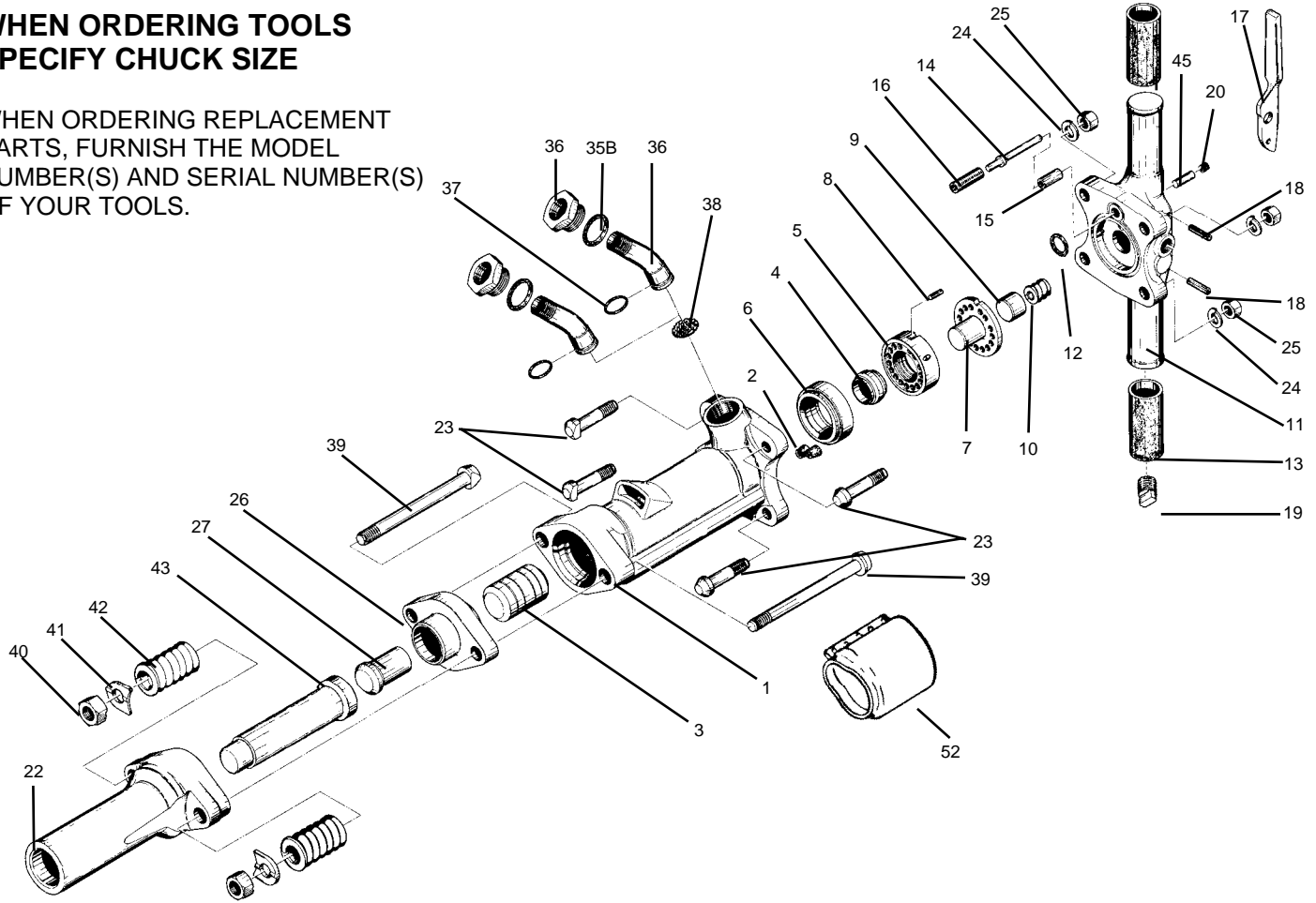
ALWAYS DISCONNECT THE AIR SUPPLY BEFORE CHANGING CHISELS OR DISMANTLING THE TOOL FOR SERVICE OR REPAIR. FOR MAXIMUM SAFETY WE ADVISE THE INSTALLATION OF A SHUT-OFF VALVE AT THE END OF THE AIR LINE.

DO NOT EXCEED 100 PSI (7BAR) WORKING PRESSURE.

PARTS LIST SPIKE DRIVER 60 lb class SSD-60

**WHEN ORDERING TOOLS
SPECIFY CHUCK SIZE**

WHEN ORDERING REPLACEMENT
PARTS, FURNISH THE MODEL
NUMBER(S) AND SERIAL NUMBER(S)
OF YOUR TOOLS.



INDEX	PART	DESCRIPTION	INDEX	PART	DESCRIPTION
1	SI6601	CYLINDER	22	SI6622	FRONTHEAD - SPIKE DRIVER
2	SI6602	CYLINDER PLUGS (5)	23	SI6623	BACKHEAD BOLT (4)
3	SI6603	PISTON	24	SI6624	BACKHEAD BOLT LOCKWASHER (4)
4	SI6604	AUTOMATIC VALVE	25	SI6625	BACKHEAD BOLT NUT (4)
5	SI6605	VALVE CHEST	26	SI6626	TAPPET SEAT
6	SI6606	VALVE SEAT	27	SI6627	TAPPET
7	SI6607	VALVE GUIDE	35	SI6035	AIR INLET SWIVEL
8	SI6608	VALVE DOWEL PIN	35B	SI6035B	AIR INLET SWIVEL O-RING
9	SI6609	BACKHEAD PLUNGER	36	SI6036	AIR INLET SWIVEL NUT
10	SI6610	BACKHEAD PLUNGER SPRING	37	SI6037	SWIVEL NUT O-RING
11	SI6611	BACKHEAD BARE (incl. #6615)	38	SI6038	AIR INLET SCREEN
NS	SI6611C	BACKHEAD ASSBLY. COMPLETE	39	SI6639	FRONTHEAD BOLT(2)
12	SI6612	BACKHEAD VALVE PORT O-RING	40	SI6640	FRONTHEAD BOLT NUT(2)
13	SI6613	RUBBER GRIP(2)	41	SI6641	FRONTHEAD BOLT LOCKWASHER(2)
14	SI6614	THROTTLE VALVE	42	SI6642	FRONTHEAD BOLT SPRING(2)
14B	SI6614B	THROTTLE VALVE O-RING	43	SI6643	SPIKE DRIVER DOLLY
15	SI6615	THROTTLE VALVE SLEEVE	45	SI6645	OIL CONTROL FELT
16	SI6616	THROTTLE VALVE SPRING	52	SI6652	MUFFLER ASSBLY. (OPTIONAL)
17	SI6617	THROTTLE LEVER			
NS	SI6617S	SAFETY LEVER COMPLETE (OPT.)			
18	SI6618	THROTTLE LEVER PIN (2)			
19	SI6619	OIL RESERVOIR PLUG			
20	SI6620	OIL CONTROL FELT PLUG			

**Sullivan
Palatek**